

# Written Installation Instructions for:

## **Majestic River**

(54" wide x 69" tall)



**Some of the illustration pictures are of different fountains.**



Hood - 1



Tray - 1



Water Distribution - 1

Pebble Shelf - 1



Pebbles in bag - 4



Pump - 2

1" Grabber Screw - 30



2.5" Grabber Screw - 10



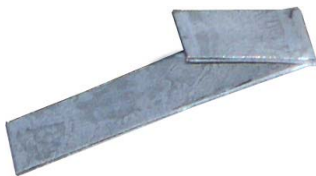
Rubber Stopper - 4



Wire Tie - 4



Leveling Wedge - 2



Hose Clamp - 4



Wing Nut - 18



EZ Anchor - 24



Scotch Brite Pad - 2



Pump Pad - 2



Not Pictured:

- Hose
- Power cord
- Light Bulbs – GU 10 50W

## Tools Needs

You should be able to install your water feature using only basic and commonly had tools. Be sure to have at least the following tools before you begin.

- Drill with a Philips head bit
- Carpenters level
- Stud finder
- Pencil
- Philips head screw driver
- Flat head screw driver
- Chisel
- Pair of pliers
- Knife and scissors
- Tape Measure
- Step Stool
- A scrap piece of 2x4 or other wood
- And a good pair of working gloves for everyone involved



Be sure to follow and understand all the safety suggestions and instructions before you begin the installation.

## Choosing a location

Most likely you have already decided on a location for your new Adagio Water Feature. In the event that you are still undecided, we would like to discuss a few things to think about as you make your decision.

**Wall types:** Your water feature can be hung on a number of different wall types. We are going to discuss the steps to hang it on a wood studded sheet rock wall. But you can hang it on tile, stone, concrete, block, or a sheet rock wall with metal studs.

**Framing:** As a general design idea it is often best to allow enough wall space to properly frame the water feature. Depending on the surrounding décor, you may want to allow for open wall space on all four sides.

**Access:** The most demanding maintenance requirement associated with the water feature is keeping it full of water. To facilitate maintaining the proper water level we suggest placing the fountain in a location that is easily accessible.

**Traffic:** The hood and tray of the water feature project six inches out from the wall. Because of this, if it is placed in a narrow walkway it can act as a barrier to traffic. We suggest placing it in an area that will not interfere with the traffic flow of the room.

**Power:** The water feature requires 110 volt power and will operate at less than 2 amps. When deciding on the location of your water feature you need to consider a power source. For aesthetic reasons we suggest placing the outlet directly behind the stone. This allows the cord to be hidden from sight. If you are going to have an electrician put in an outlet, we suggest wiring it to a wall switch for ease of turning on and off. The location of the outlet will be discussed later.

## A - Unpacking the crate and box

Before beginning the installation we suggest unpacking and unwrapping everything. Be sure to set it aside and out of the way to avoid damaging it or hurting yourself.

## B - Marking the wall

Before you begin hanging the brackets you need to mark the wall in a few places.

**(1) First, you need to have a clear idea of where on the wall the water feature is going to hang.**

To help with this the Majestic River is

**54" wide by 69" tall**

**(2) Next, using a pencil, put a small dot on the wall to represent the top center of the water feature.**

**(3) Lastly mark where each stud is in the area of the water feature.** These marks will be covered by the stones when everything is completed. You may want to use a stud finder to insure the accuracy of the marks.



## C - Assemble the EZ install Bracket

The EZ install bracket comes in 4 pieces; the top, the bottom, and two straps. They are fastened to each other with the included wing nuts. Slide the straps over the attached screws and ensure a snug fit. Then thread the wing nuts and tighten.



## D - Install upper hanging screw and set bracket

**(1) Approximately one half an inch below the dot you marked as the top center; screw an EZ anchor into the wall.** If this spot happens to be where a stud is do not insert the EZ anchor, simply screw one of the 2.5 inch grabber screws directly into the stud. Otherwise screw the 1 inch grabber into the EZ anchor. Do not tighten the screw all the way. Leave it about one quarter of an inch out from the wall.



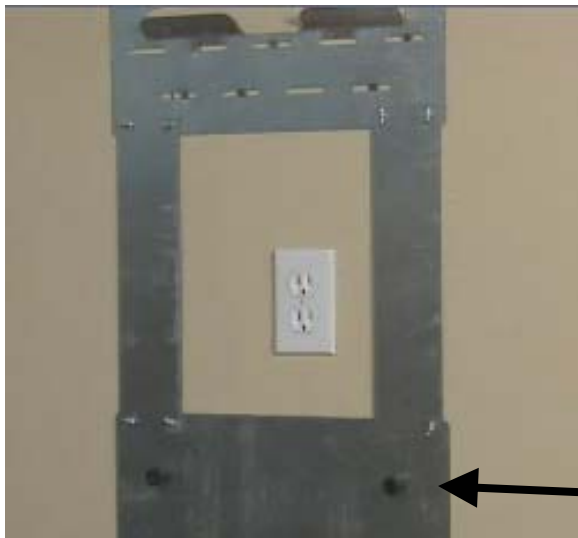
**(2) Next, hang the assembled EZ install bracket on the screw by the key-hole shaped opening at the top center.** This opening will allow you to remove and replace the bracket easily without unscrewing the screw, it will also allow you to easily level the bracket.

**(3) Using a carpenter's level in the lip, ensure that the bracket is level and mark all the holes including the slots with a pencil.** Once this is done remove the bracket and set it out of the way.

The holes at the top and the holes at the bottom require EZ anchors unless they happen to be over a stud. If so, no EZ anchor is necessary as you can screw directly into the stud.



The slotted holes toward the center of the bracket carry almost all the weight of the stone and are the most critical. **You must be able to fasten into at least two studs in this area.** If you can fasten to more than two studs or screw more than one screw into each stud it is even better. **(4) After determining where the stud intersects these slots, spread the remaining EZ anchors across the area as evenly as possible to disperse the weight over a large area.**

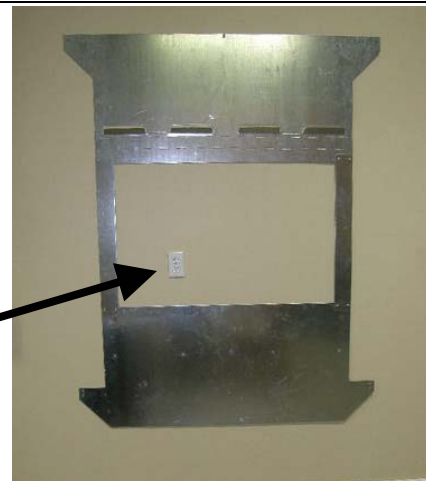


Now that the wall is fully prepared, it is time to mount the bracket. Hang it back on the top center screw and check for level one more time. **(5) When everything is ready, screw the 2.5 inch grabber screws into the stud or studs and the 1 inch grabber screws into the EZ anchors.** Make sure the bracket is level and all the screws are tight including the top center screw.

**(6) Next, press the one inch rubber stoppers onto the small screw pegs.**

## E - Electrical outlet

You will notice the open space in the center of the EZ install bracket. If you decide to wire an outlet behind the stone to allow for a concealed power cord, this is the area you want the outlet to be. We also recommend wiring the outlet to a wall switch for ease of turning the water feature on and off. It is also okay not to wire an outlet behind the stone; we will cover how to run the cord for this option later.



## F - Hanging the stones

If you have wired an outlet behind the stones be sure to **(1) plug in the power cord before hanging the stones.** Once the stones are on the wall it is very difficult to access the outlet.

The stone comes with a mounting bracket already attached to the back. **(2) To hang the stone on the wall simply lift it until the downward pointing lip on the stone bracket nests with the upward pointing lip on the EZ install bracket.** Once both stones are on



the wall be sure they are pushed together as tight as possible and that the seam is in the center of the water feature. Near the bottom, the slab should rest on the one inch rubber stoppers.

### **Warning:**

**Each slab is very heavy. We strongly recommend using two or more people to lift the stone onto the wall.**

It is a good idea to use a scrap piece of wood to set the stone on before you lift it. This will allow you to get your fingers underneath the slab with out risk of hurting yourself.

## G - Preparing the Water Distribution Unit

Because each water feature uses 100 % natural stone, each piece is unique and different. Because of this, we have designed the Water distribution unit to allow customization to any stone.

With both stones on the wall and pushed together, fit the water distribution unit on the top. There are a few things to look for and adjust while fitting the water distribution unit properly.



**(1) First, be sure it fits tightly on to the stone.** You can adjust the tightness using the tabs on the back of the unit.

**(2) Next, insure the bottom front lip forms to the face of the stone.** Because the stone is natural and unpredictable it may have edges and clefts that create gaps between the lip and the face of the stone.

The water distribution is made of a very pliable copper and designed to be bent both in and out to fit the contours of the stone. Make the necessary adjustments to the lip by bending it in and out until it fits properly and remains as flush as possible across the stone.

Once you feel comfortable with the fit, **(3) remove the water distribution from the stone and feed a hose down behind each stone through the gap in the middle of the stone bracket.** There should now be a hose running down behind the middle of each stone. Now **(4) attach both hoses to the water distribution unit,** be sure to use the supplied hose clamp or zip tie to strengthen the connection. In either case, tighten the fitting to insure that no water can escape. Then replace the water distribution on the top of the slabs. You may need to work with the hoses a little to be sure they are not kinked and run from water distribution down to beneath the stone.

The next thing to notice is the baffling pad. The Water Distribution Unit should come with the pad already installed, if it is not or if you are replacing it, **(5) simply Bend the pad in half and insert it into the Water Distribution Unit in front of the water inlet nozzle.** In the area of the water inlet make certain the baffling pad slides all the way down and in front of the nozzle. Because the nozzle sticks out a little it has a tendency to snag the baffling pad. Improper installation of this pad may cause water to flow unevenly or to spray out

from the top.

There is one more set of adjusting tabs. These are the outer edge adjusting tabs. **(6) Generally these tabs need to be bent in just a little.** You can make any fine tuning adjustments later.



**(7) The final step in preparing the water distribution is to clean the front surface with the supplied scotch brite pad.** Go back a forth until the entire surface is noticeably cleaner and shinier. Be sure to cover the top edge and the bottom lip thoroughly.





**(8) You may need to trim each hose a little at the bottom to allow the pump to point straight up.** Each hose should be cut approximately 2 inches below the bottom of the slab.

**(9) Next apply a black pump pad to the side of each pump opposite the water nozzle.** When installed the pump should rest on the pump pad and should not touch the back of the water tray. This will help in quieting the sound of the motor.

This is how the pump should rest in the tray.  
(Picture taken while tray is off the wall)

**(10) Now, slide each hose onto the water nozzle and apply a hose clamp to ensure a tight fit.** The pump should be hanging beneath the slab.



## H - Hanging the tray



You will notice small square cut outs on the back of the water tray. These squares receive the hanging hooks on the EZ install bracket. **(1) Slide the plastic back-splash-guard up and behind the stones, then line up the squares with the hooks and press the tray down and towards the wall until it is hooked and firmly in place.**

**(2) If you do not have an electrical outlet behind the stone we recommend placing the power cord behind the Water tray.**

Leave approximately 6 inches of exposed cord. We can adjust the cord length later.

The electric cords from the pumps should come up the right and left side of the stones. Be sure they are free from any kinks.



## I - Testing water flow

Now is a good time to test the water flow. **(1) First, go over the front lip of the water distribution with the scotch brite pad one more time to ensure it is clean.**

**(2) Then, fill the tray with water until the pumps are completely submerged.** We strongly suggest using distilled water. This will not leave any hard water build-up on the stone or metal.

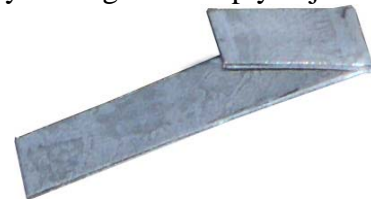
**(3) Now, plug both pumps into an outlet or extension cord.** This is for testing purposes only. It usually takes ten to twenty minutes for the entire stone to get completely wet.

After a few minutes you should be able to tell if there are going to be any dry spots. If there is any area of the Water Distribution where water is not coming over, **(4) simply shut off the fountain, and aggressively clean that area with the scotch brite pad.** Be sure the area is free from oils and debris. You may need to do this two or three times before the water will flow properly.



The outer edge adjusting tabs are used to control water flow at the edges of the stone. If there is a large amount of water flow at one or both edges you may experience a small amount of dripping off of these tabs. **(5) In this case, simply bend the tabs in towards the center to redirect the water onto the stone.** These tabs can also be adjusted to allow more or less water to the edge of the stone.

Because each installation may vary just a little **(6) your Water Distribution Unit may need to be leveled.** You can determine if it needs to be leveled by the water not flowing evenly but instead flowing stronger on one side than the other. The included leveling wedge can be used to shim either side up until it is level. The wedge is made of a very pliable metal and can be squeezed flat or opened to a variety of heights. Simply adjust the wedge to the height you expect and insert it under the Water Distribution Unit, between the unit and the stone. Then place your carpenter's level on the top lip of the Water Distribution Unit and adjust it until it is level.





**(7) Next, take a moment to look for small splashes coming off the stone.** They are usually caused by small edges in the rock. These are very easy to fix. Simply take a flat head screw driver or a chisel and wear away the edge a little to smooth it over. The smoother it is the less likely water is to jump off. Go over the entire stone and smooth any edges you think may cause splashing. You may need to unplug the pump to avoid making a mess.

After you feel you have the water distribution set, be sure the pump is unplugged and **(8) take the scotch brite pad and lightly go over the stone while it is still wet.** This will help the water to completely cover the stone.

## J - Hang the hood

You will notice the same square cut-outs in the back of the hood as are on the water tray. **(1) Slide the hood up and over the stone and water distribution then hook it on to the EZ install bracket.**

**(2) Now you can plug the power cord from the wall and the power cords from the pumps in to the light bar at the top.** The power cord from the wall plugs into the left end and the power cord from the pumps plug into the outlet on the right and left side. If there is excess cord you can tuck it behind the stone and water distribution.



**(3) Next, screw the supplied light bulbs into the sockets:**

50 watt halogen PAR 20 bulbs are included and replacement bulbs can be purchased at most hardware stores.

**Warning: As always, never remove or insert the power cords or light bulbs while the water feature is turned on. Doing so could result in electric shock.**

## K - Install Pebble Beach

Slide the pebble shelf into the water tray and adjust it to make it as level as possible. The back lip of the shelf can be adjusted by loosening the screws. The pebbles will rest on this shelf and help prevent splashing. When refilling the tray, stop when the water level is equal the pebble shelf. Do not over fill the water tray. This can cause the tray to leak.



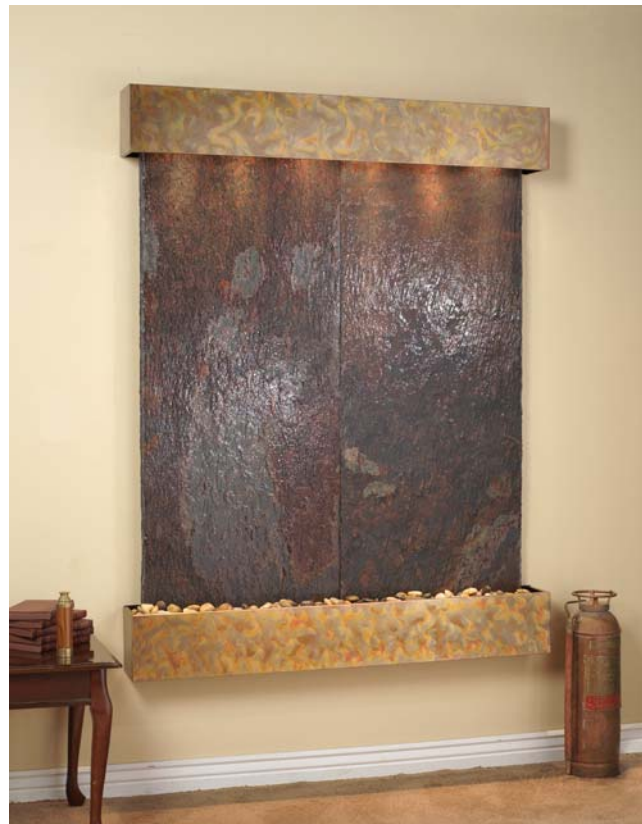
---

Thank you again for your interest in our products. We hope your Adagio water feature will bring tranquility into your surroundings for years to come.

We are here to help in any way we can. If you ever have any questions please feel free to call our customer service representatives.

1-866-323-2446

[www.adagiocollection.com](http://www.adagiocollection.com)



## Maintenance

### Filling Water Tray:

The biggest maintenance requirement is keeping the water tray full of water. Because of evaporation your water feature will put moisture into the air. The amount of use and the climate will determine how often you need to fill it. Be sure the water level stays at least above the top of the pump and no more than one and a half inches from the top of the tray. Filling the water tray any more than 1 and a half inches from the top can result in water going over the top of the plastic liner and leaking onto the floor. We also recommend filling the water tray when the water feature is turned off.

To avoid almost all cleaning and to prolong the life of your water feature, we strongly suggest using distilled water. This will not leave hard water build-up on the stone or metal.

### Cleaning Metal:

When it is time to clean the metal portion of the water feature we recommend using a non-abrasive cleaner with ammonia in it. Most window or glass cleaner works well.

### Dull Stone:

Over time, if your stone color dulls or you begin to accumulate hard water buildup, turn off the pump and scrub the stone vigorously with a firm bristled acrylic brush. This should remove most of the build up. If it does not, the stone may require a more aggressive cleaning with Lime-A-Way or CLR.

### Foul Water / Algae:

If your water feature is in direct sunlight or near a window or door that is often open the stone may begin to grow algae. This manifests itself as a slight slime on the stone or a foul water smell. The best way to combat this is with a few drops of bleach once or twice a month. We can not emphasize enough the importance of using only two or three drops at a time and never more than once a week. Too much bleach will bleach the stone and create an uncomfortable chlorine smell. The use of too much bleach will void all warranties.

### Full Fountain Cleaning:

We recommend doing a full fountain cleaning once or twice per year. This will involve removing all the water from the water tray and cleaning it out, scrubbing down the stone with an acrylic brush, and taking apart the Water Distribution Unit and cleaning it.

### Custom Engraving:

If your stone has a custom engraving be sure NOT to use the scotch brite pad or an acrylic brush over the area of the engraving. This could result in the custom color being removed from the stone.